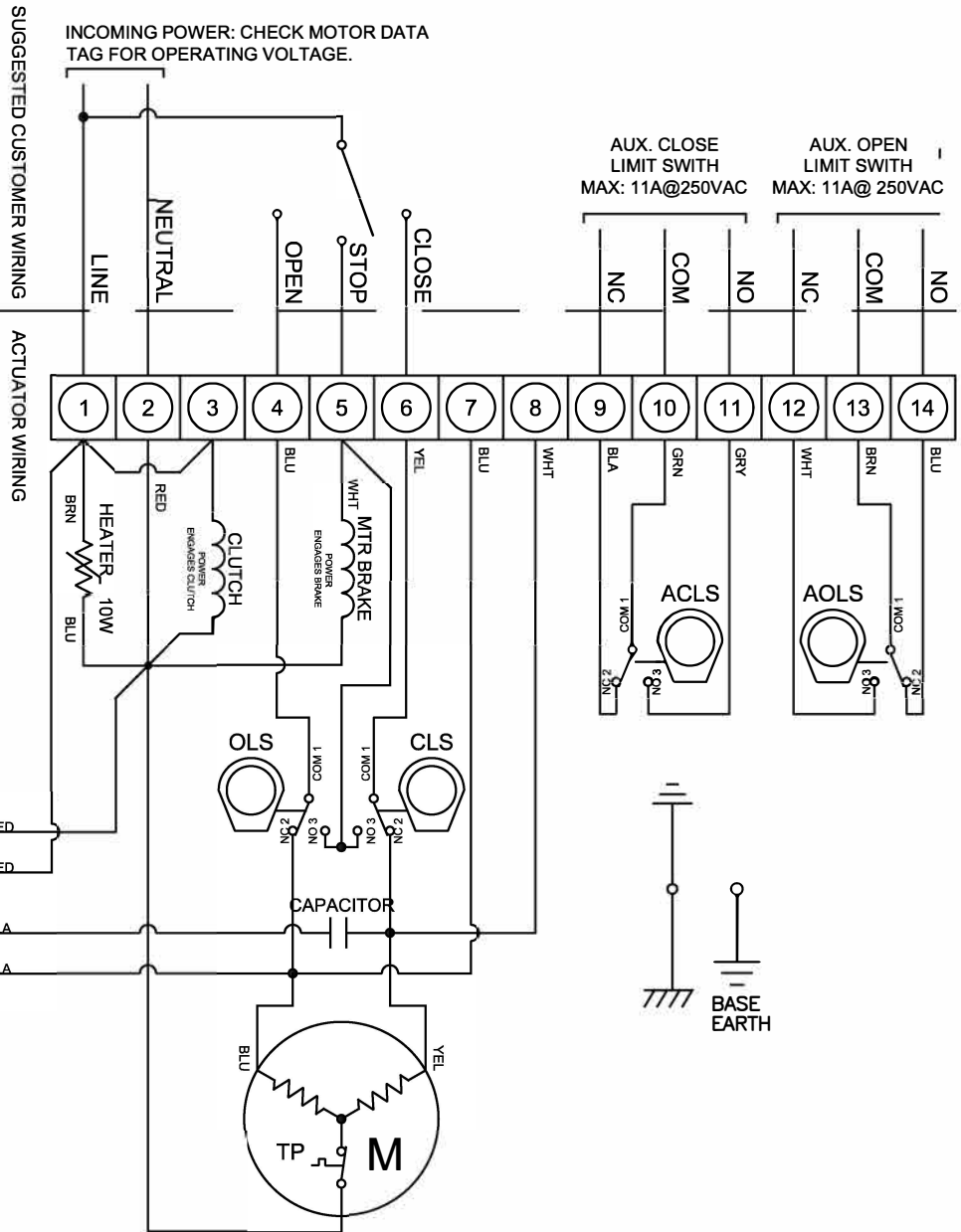


LIMIT SWITCH OPERATION			
SWITCH	CLOSED	INTERMEDIATE	OPEN
CLS 1-2			
CLS 1-3			
OLS 1-2			
OLS 1-3			
ACLS 1-2			
ACLS 1-3			
AOLS 1-2			
AOLS 1-3			
[] = OPEN CIRCUIT		[█] = CLOSED CIRCUIT	
SYMBOL	DESCRIPTION	RATING	
ACLS	AUX. CLOSE LIMIT SWITCH	11A @ 250 VAC	
CLS	CLOSE LIMIT SWITCH		
AOLS	AUX. OPEN LIMIT SWITCH		
OLS	OPEN LIMIT SWITCH		
EACH ACTUATOR SHOULD BE POWERED THROUGH INDIVIDUAL SWITCH OR RELAY CONTACTS TO PREVENT CROSS FEED BETWEEN TWO OR MORE ACTUATORS.			

Operation Notes:

- Power to terminal 4 will drive motor CCW. Brake energizes when NO of OLS closes to hold actuator in CCW position.
- Power to terminal 6 will drive motor CW. Brake energizes when NO of CLS closes to hold actuator in CW position.
- Power to terminal 5 will energize brake and hold actuator in intermediate STOP position.
- Loss of power will cause spring to return actuator to fail position (limited by adjustable mechanical stop bolt).
- Fail Closed (FC) Model: Fail Position = CW
Fail Open (FO) Model: Fail Position = CCW



9955 INTERNATIONAL BLVD.
CINCINNATI, OHIO 45246
PHONE: (513) 247-5465
FAX: (513) 247-5462

TOLERANCE UNLESS OTHERWISE SPECIFIED:
FRACTIONS DECIMAL DIM. AS SH.
THIRD PLACE DECIMAL DIM. AS SH.
ANGULAR DIM. 1:5"

DRAWN BY KJS
DATE 08/30/22

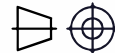
CHECKED BY TEM
DATE 08/30/22

RELEASED BY TEM
DATE 08/30/22

HEAT #

SHEET 1 of 1

DO NOT SCALE DRAWING



DESCRIPTION

SRX-3200 ELECTRIC ACTUATOR
120/240 VAC / 1PH / 50-60 HZ
TWO POSITION

DRAWING NO.

SE01852

REVISION

THE DESIGN AND DISCLOSURE CONTAINED IN THIS DRAWING WAS ORIGINATED BY, AND IS EXCLUSIVE PROPERTY OF A-T CONTROLS, INC. IT IS FURNISHED FOR VENDOR INFORMATION ONLY AND IS NOT AN AUTHORIZATION OR LICENSE TO MAKE, TO CONSTRUCT OR TO FURNISH THIS INFORMATION TO OTHERS. ALL DRAWINGS MUST BE RETURNED TO A-T CONTROLS, INC. ON DEMAND. THIS DRAWING IS NOT TO BE REPRODUCED OR COPIED IN ANY FORM WITHOUT THE EXPRESS WRITTEN PERMISSION OF A-T CONTROLS, INC.